



Vacuum Packer

20-Second quick vacuuming is not the only strength. While looking like a fair lady, our equipment provides powerful and reliable performance.

Come and experience.

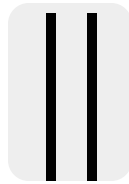
La Copine

La Copine | Vacuum Packer

| *Fast and reliable Vacuum packing*



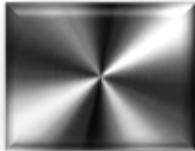
- Durable, Reliable and strong Gas absorber allows and keep the lid well sealed throughout vacuuming process.



Double seal

- 2 x 3 mm Convex sealing make products remain strong hermetic sealing condition.

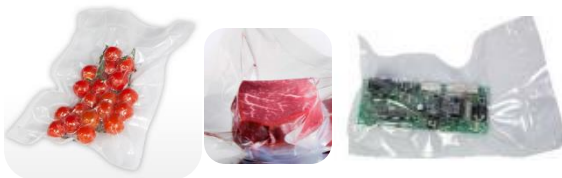
| *Robust and Easy-to-use design*



- Both vacuum chamber and body are constructed with high quality Stainless steel.
- Easy-to-use digital control panel which is water-proof and has micro-processor allows for a precise control of vacuum packing operation
- Seal bars are easy to remove, which makes cleaning and maintenance simple and fast



| *Multi-purpose usage*



- Vertical & Horizontal packaging with insert plate (SBV-400VH)
- Professional vacuum packing for food and non-food product



- Full range to meet the demand of small to medium and high volume commercial and food service operations

Vacuum Packing Machine

Table-top

Mini Table Top



SBV-280T

Standard



SBV-400TS



SBV-400TD



SBV-400VH

Floor Standing Type



SBV-600L



SBV-600S



SBV-400TS2



SBV-800L

MULTIPLE VACUUM PACKING MACHINE

SBV-400VH (SBV-400TS / SBV-400TD)



- **CHAMBER SIZE (mm)**
 - 440 (W) x 420 (D) x 140 (H)
- **MACHINE SIZE (mm)**
 - 485 (W) x 525 (D) x 510 (H)
- **SEAL BAR LENGTH**
 - 420 mm x 1 EA
- **PUMP CAPACITY**
 - 20 m³/h

KEY FEATURES



- Vertical & Horizontal packing
 - Insert plate for adjusting vacuum chamber height



- Practical table-top design suitable for anywhere



- Easy and intuitive operation with digital control panel



- Controlled ventilation for protection of product and packaging



- Clear transparent lid for checking vacuum packing progress



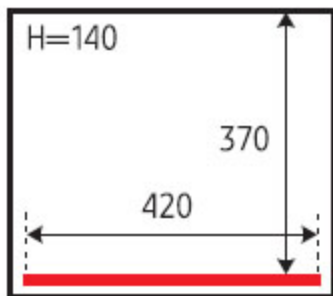
- Professional vacuum packing for attractive price of food and non-food products

TECHNICAL SPECIFICATION

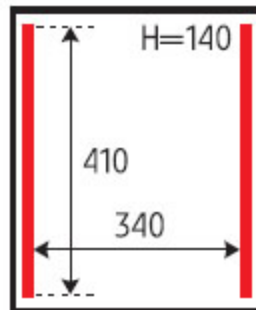
MODEL	SBV-400TS	SBV-400TD	SBV-400VH
CHAMBER SIZE (mm)	400 x 420 x 140	440 x 420 x 140	440 x 420 x 140
MACHINE SIZE (mm)	485 x 525 x 510	485 x 525 x 510	485 x 525 x 510
SEAL BAR LENGTH (mm)	420 x 1 EA	410 x 2 EA	420 x 1 EA
WEIGHT (kg)	67	67	67
PUMP CAPACITY (m ³ /h)	20	20	20
CYCLE TIME (sec)	15	15	15
PUMP TYPE	Rotary Oil	Rotary Oil	Rotary Oil
POWER CONSUMPTION (kW)	1.4	1.4	1.4

The company reserves the right to make modifications to the products without prior notice.
All information correct at time of printing.

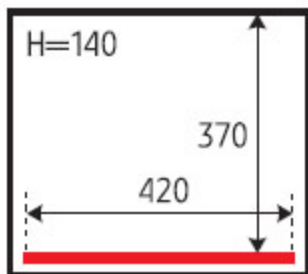
PLAN VIEWS



SBV-400TS



SBV-400TD



SBV-400VH

